

LEON

Go all out, let them stare

We have one life to live, make the most of the journey. Be fierce, move majestically and enjoy the journey. Go all out with The SEAT Leon, it speaks louder than words.



Our global range of cars and product specifications varies from country to country. Please, visit your local SEAT website to know more about the product offer available for you.



Our global range of cars and product specifications varies from country to country.
Please, visit your local SEAT website to know more about the product offer available for you.

Contents

01	SEAT	King of the road Live Large	06 08
02	Your Leon	Exterior design Interior design Comfort Technology SEAT CONNECT Driving Experience Safety e-HYBRID	10 14 16 20 22 24 28 32
03	Your way	FR Style Wheels Colours Upholsteries	38 42 46 48 50
04	Your accessories	Black Edition Customisation Interior Transport Protection Pet Accessories Safety	54 58 62 64 70 72 74
05	At your service	SEAT Care Environmental information	78 80

King of the road

Fabulously bold. Move beyond limits and skip the common with the king of the road, the SEAT Leon. Designed & made in Barcelona.



Our global range of cars and product specifications varies from country to country. Please, visit your local SEAT website to know more about the product offer available for you.

Live Large

Four generations in and the SEAT Leon continues to go big with the SEAT Leon Sportstourer. Bold design, advanced safety tech and enhanced connectivity. Broaden your horizons with a larger interior and visionary full LED headlights. Both SEAT Leon models are available in plug-in e-HYBRID versions for electrified adventures. Go beyond the basics – it's all about living large!



Our global range of cars and product specifications varies from country to country. Please, visit your local SEAT website to know more about the product offer available for you.

Hypnotic design

When it looks this good, it's hard not to stare. With an attractive Diamond grille, full LEDs at the front, and a Coast-to-Coast LED light at the back. Expertly designed with better proportions for a bolder

presence overall. The SEAT Leon's exterior has smooth flowing surfaces and dynamic lines to give off a fresher, sportier look. This is a car that stands out. Even when it's standing still.



Our global range of cars and product specifications varies from country to country. Please, visit your local SEAT website to know more about the product offer available for you.

Move the right way

Audacious yet gracious, SEAT Leon's Performance 18" Machined Alloy wheels create eye-catching turns on every journey. Accompanied with an ambience-enhancing Panoramic Sunroof to create an expansive

feel, feel safe in the knowledge you're driving an inimitable SEAT Leon, easily recognised from a distance with its signature logos on the car exterior.



Our global range of cars and product specifications varies from country to country. Please, visit your local SEAT website to know more about the product offer available for you.

You can leave the light on

Illuminated to show off its best angles. The SEAT Leon's wraparound ambient LED welcomes you with an arc of light that extends across the whole dashboard. A blend of design and functionality, the light also flashes to warn you if it's unsafe when opening the door. At the centre, the dashboard is subtly angled towards you for better access to the 12.9" Navi System with touch slider. More comfortable, more connected.



Our global range of cars and product specifications varies from country to country. Please, visit your local SEAT website to know more about the product offer available for you.

More to be impressed by

Get in and settle in, with Dinamica® microfibre upholstery providing a refined touch and feel. The Leon Sportstourer comes with an epic 1,600l of space - with rear seats folded - and you'll have easy handsfree

access to it all thanks to the Electric Tailgate - just put your foot under the sensor at the rear of your Leon and, open sesame! If you need even more room, the modular seats can also be adjusted to your needs.



Our global range of cars and product specifications varies from country to country. Please, visit your local SEAT website to know more about the product offer available for you.

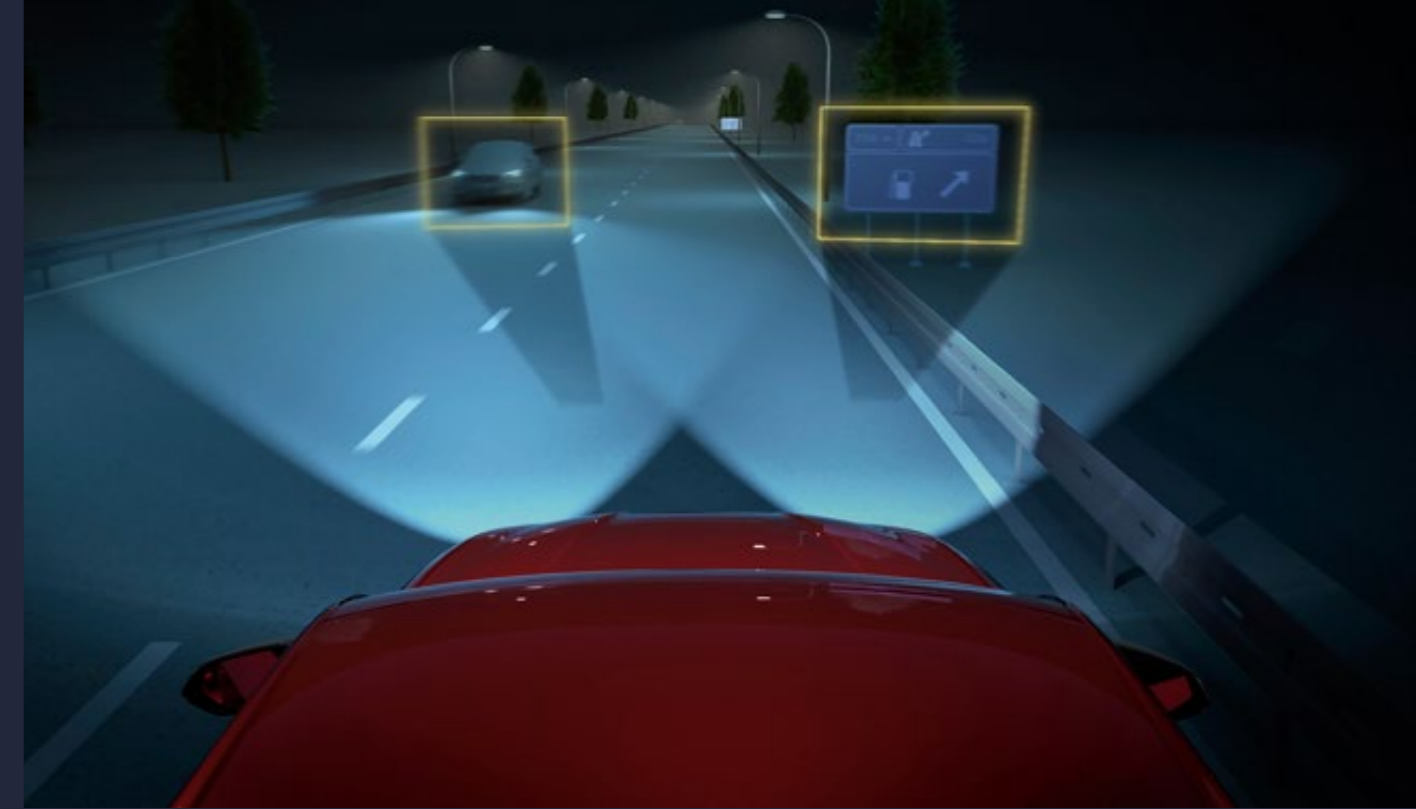


Our global range of cars and product specifications varies from country to country.
Please, visit your local SEAT website to know more about the product offer available for you.

Enchanted by possibility



Our global range of cars and product specifications varies from country to country. Please, visit your local SEAT website to know more about the product offer available for you.



Technology

Easy navigation, climate control, calls and music – whenever you want – making every journey enjoyable. Take control with the 12.9" HD Navi System, it naturally responds to voice commands, to suit your preferences.

Enjoy enhanced night-time driving with Matrix LED technology. Adaptive beams adjust to road conditions and surrounding traffic, ensuring optimal visibility without dazzling other drivers, illuminating your path for a spectacular vision.

Connect

Call it connection or just chemistry

Whether you're behind the wheel or on the move, the My SEAT App puts your Leon in your hands. Stay in touch with your car through your smartphone, or use SEAT CONNECT via the touchscreen to start planning your route or organising your playlist. Now, you can locate parking spaces, see real-time traffic conditions and get route information to improve your experience even more. Discover SEAT CONNECT to start enjoying the true freedom of full connectivity.



Always covered

Need urgent assistance on the road? Safety and service features ensure you're always connected. Especially when you need it most.

- Assistance required? Push the Breakdown Call button to contact our agents to ask for help.
- Any questions? Press Customer Care button to put you in touch with SEAT Service.
- Time for a check-up? Your Customer Care service partner receives the car status and arranges appointments proactively.



Your car in the palm of your hand

With the Remote features, being away from your Leon doesn't mean being out of touch. Just pick up your smartphone and start your journey.

- Who needs a key when you've got a smartphone? Tap the screen to lock or unlock your Leon.
- Preheat your cabin using the Remote Climatisation* feature on your My SEAT App. You can choose to activate it automatically when connected to a charging point for extra efficiency.
- Forgot where you parked? Use Parking Position to reveal the location.
- Lent your Leon to someone else? Track it's speed and location.
- Keep calm and carry on with what you're doing. Your Leon will warn you through your smartphone if it detects a theft situation* when you're away.



Maps, media and much much more

A digital lifestyle means having your content available 24/7. Because when you're fully connected, the possibilities are endless.

- Drive connected. Get online traffic information and real-time updates on road conditions.
- Ready for anything. Find the nearest parking spaces and petrol stations.
- What's the best way to get there? Online route calculation helps to optimise your journey.
- Just say it. Natural voice control can be used to activate navigation, radio and media.

*Functions subject to optional equipment or specific motorisations. CONNECT Plus cluster include a free-trial period. After this period, in order to keep enjoying the service a renewal is required.



Our global range of cars and product specifications varies from country to country. Please, visit your local SEAT website to know more about the product offer available for you.

Too tempting to stay away



Our global range of cars and product specifications varies from country to country. Please, visit your local SEAT website to know more about the product offer available for you.



Driving Experience

Brimming with smart solutions to make things simpler. As you approach, the Kessy Keyless System unlocks the doors automatically. And your Leon will already be warmed up to your preferred temperature, thanks to the Parking Heater. Also, don't forget to pop your smartphone in the Connectivity Box for easy wireless charging.

If you're on a long drive, the Tiredness Recognition system will make sure you stay alert all the way. And when you get there, let Park Assist take control of your steering wheel to make getting into those tight spaces a breeze.

Driving Experience

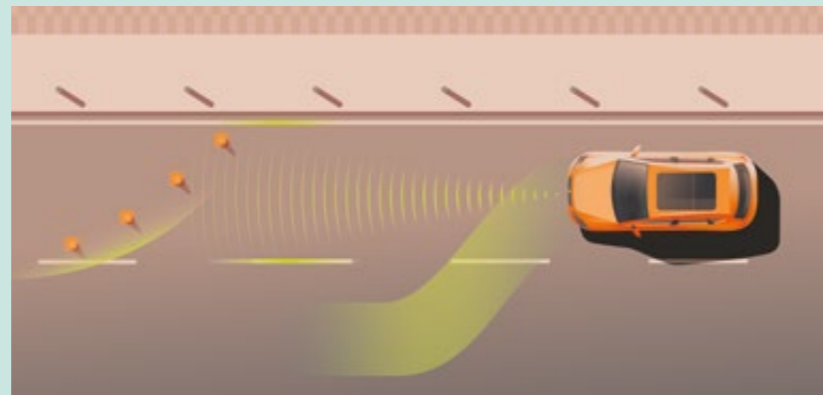


Traffic Jam? Music to your ears

Upgrade your driving experience listening your favourite radio stations and podcast, thanks to SEAT CONNECT. Discover more than 10.000 live stations, podcast episodes and nearby stations. Also, improve the quality of the sound by the Stream quality section.

Our global range of cars and product specifications varies from country to country. Please, visit your local SEAT website to know more about the product offer available for you.

All eyes on you



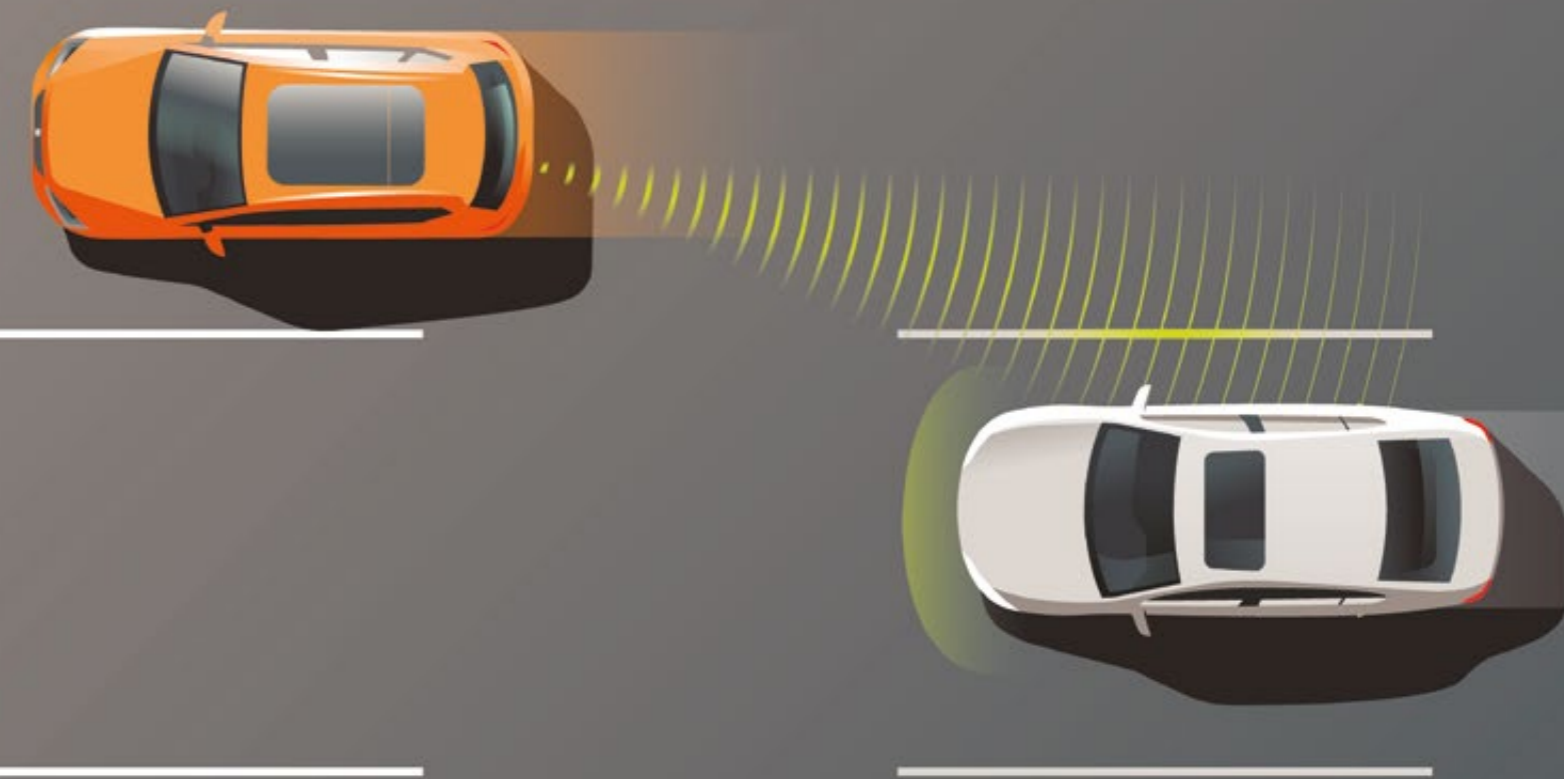
Exit Assist

Say no to scrapes. When pulling out of a parking spot, Exit Assist alerts you of approaching vehicles or obstacles with an acoustic and visual sign. If you fail to respond, it brakes automatically to avoid a collision.



Lane Assist & Roadworks Assist

Don't stray from your lane. The camera detects road markings and warns you if you're about to cross a line. The system also supports you by actively correcting steering to keep you on track. Roadwork Assist can recognise provisional signage, like roadwork barriers or guard rails.



Our global range of cars and product specifications varies from country to country. Please, visit your local SEAT website to know more about the product offer available for you.

Why worry? We've got your back. The SEAT Leon combines performance with advanced driving assistance systems. With smart safety technology that anticipates and reacts to any situation on the road, before you even have to.



Blind Spot Detection with Exit Warning

See, what can't be seen. Blind Spot Detection detects vehicles outside your field of vision at a distance of up to 70 metres. And when you're ready to leave your Leon, Exit Warning can detect any approaching pedestrians, traffic or bicycles. An acoustic signal sounds and the wraparound ambient LED light flashes in the doors to warn you if opening the door could cause an accident.



30 Traffic Sign Recognition
A camera in the base of your Leon's interior mirror recognizes and reads traffic signs, showing the information on the Digital Cockpit. The system keeps you informed about speed limits and overtaking restrictions during your journey.



ACC Predictive with Front Assist
Using cameras to scan the road, ACC constantly anticipates the danger ahead. Whether it's a car coming into your lane or a risky curve you're entering too quickly, your Leon is always ready to slow down. ACC Predictive can now combine with you or Navigation System to analyse bends and speed limits and incorporate that information into your adaptive speed control.



Travel Assist
Your ideal virtual assistant, Travel Assist monitors your journey, using cameras to scan for roadworks, traffic lights, road signs and curves. Using that information, it sets your speed, helping you to rise to any challenge on the road.



Our global range of cars and product specifications varies from country to country. Please, visit your local SEAT website to know more about the product offer available for you.

On the road. In control

Emergency Assist 3.0
The next generation of Emergency Assist checks in constantly to see if you need any help. If it detects inactivity behind the wheel, it softly brakes twice to alert you. If you fail to respond to the alert, the system takes control, activates warnings for other drivers on the road and automatically slows and stops your car.

e-HYBRID



Our global range of cars and product specifications varies from country to country. Please, visit your local SEAT website to know more about the product offer available for you.

Pull the plug on boredom. Enjoy all the power of a Leon. All the environmental benefits of an electric engine. All the flexibility of a hybrid. Who says you can't have it all?

The SEAT Leon e-HYBRID, available in both Leon 5D and Leon Sportstourer versions, is much more than a standard hybrid car. Like most hybrids, it recharges its battery automatically. But it's a plug-in too. That means it uses its electric motor first, only resorting to the petrol motor for extra power. To recharge, simply plug it into a conventional power network and get ready to go.

*The accurate range for your vehicle will vary according to a number of different factors which include the route, weather conditions, vehicle load (occupants + luggage), battery age and condition, optional equipment (alloys, tyres, etc.), the use of peripheral energy consumption systems such as heating, air conditioning and heated seats, as well as your driving style. The indicated range has been calculated in compliance with WLTP standards, which set out test conditions applicable to all car manufacturers to ensure the comparability of these tests for all vehicles.

Cut back on your emissions. Not your plans



Our global range of cars and product specifications varies from country to country. Please, visit your local SEAT website to know more about the product offer available for you.



e-HYBRID

Looking for a more sustainable way of driving without sacrificing performance? The innovative combination of electric and combustion engine makes the SEAT Leon e-HYBRID the most convenient low-emissions option available.

More performance, more freedom

The plug-in 85 kW electric engine combines with the 1.5 litre TSI engine to achieve 150 kW of total power. Using just the electric battery you can drive up to 131 km* with zero CO₂ emissions, giving you full access to low-emissions zones in the city. And by combining electric and petrol, the Leon e-HYBRID can reach up to 900 km without needing to recharge.

Plug in. Power up. Go

At home or on the road, plugging in your SEAT Leon e-HYBRID couldn't be quicker, or easier. Get 3 hours of charge with the SEAT charger by Elli, or 6 hours with a conventional plug. There are no limits to where you can take it.

*Charging times vary in relation to the following factors: external and battery temperature, maximum voltage of your charger system and its current condition, as well as battery condition and the use of other electrical equipment in the car during charge.

What are you waiting for?

The thrill is endless, so why not embrace it from the start? The SEAT Leon is raring to go with an alluring selection of wheels and exterior finishes with complementing upholstery fit for all tastes. It's yours however you want it.



Our global range of cars and product specifications varies from country to country. Please, visit your local SEAT website to know more about the product offer available for you.

FR trim



When following isn't an option

Sometimes it's worth going that extra mile, to get where you want to go. The FR brings even more attitude and sporty appeal to the Leon. FR-specific suspension gives you a more dynamic drive, FR bumpers and larger Performance 18" alloy wheels give you a more assured look.



Totally gripping
The multifunctional sport leather steering wheel with FR stitching upgrades every minute on the road.



Sit with attitude
The SEAT Leon FR's sporty seats keep you snug while you power into those curves. Choose Dinamica® microfibre upholstery for even more comfort.

Our global range of cars and product specifications varies from country to country. Please, visit your local SEAT website to know more about the product offer available for you.



Leave a lasting impression

Spreading light wherever you go, the Coast-to-Coast LED light extends across the back of your Leon, giving off a look that refuses to go unnoticed.



Feel the road

Performance 18" Machined Alloy wheels in Cosmo Grey. The perfect meeting of aesthetics and on-the-road capability*.



Connecting the dots

The My SEAT App and Navi System with a 12.9" screen combines to keep you in touch with your world from the driver's seat*.

Standard equipment

Safety:

- 6 Airbags (2 front, 2 front side and 2 curtain)
- Child seat anchors for child seat system i-Size
- Visual and acoustic seat belt reminder with electric contact in front and rear
- 3-point seat belts in front and rear
- Multi-collision braking system
- Lane Assist
- Multifunctional camera
- Driver alert system

Electronics:

- SEAT Digital Cockpit
- 10.4" SEAT Media System+
- 6 speakers
- Interior ambient lighting
- Rear parking sensor with park distance control
- Electronic Cruise Control System (CCS) with Speed limiter
- Electronic parking brake
- Speed-related variable steering assist (Servotronic)
- Eco LED headlights
- Full LED rear lights with Infinite Light

Exterior:

- Exterior mirrors in Cosmo Grey
- Rear spoiler
- Sport bumpers
- Heat-insulating windshield glass
- Rear dark tinted windows
- Dynamic 17" Alloy wheels
- Breakdown kit
- Tyre pressure monitoring system

Interior:

- Grey greenhouse
- Multifunctional sport leather steering wheel
- Manual height adjustment for front seats
- Manual lumbar support adjustment for front seats
- Luggage pockets on backrest
- 3-zone Climatronic
- Interior chrome inserts
- Illuminated door step
- Sun visors with illuminated mirror
- Operating voltage 12 V
- Alternator 140 A

*This equipment is optional.

Our global range of cars and product specifications varies from country to country. Please, visit your local SEAT website to know more about the product offer available for you.

Style trim



More style More substance

Welcome to your world. The Leon Style trim has plenty to boast about. From the fog lights with cornering function to all the key essentials inside and out, the Style trim is for those who know which path they want to travel.



You're welcome
The Leon's welcome light lets you know you've arrived and are ready to go.



See further, see better
The Fog Lamps come complete with a cornering functionality to help you cut through the mist and take on those challenging corners.

Our global range of cars and product specifications varies from country to country. Please, visit your local SEAT website to know more about the product offer available for you.



A lasting thrill

Drive with more passion, style and performance on any road thanks to the Dynamic 17" Alloy wheels*.



Hassle-free parking

Use Park Assist alongside your rear-view camera to turn tight spaces into easy parking places*.



Everything you need

The customisable Digital Cockpit puts your media, driving assistance and navigation in one place. And then lets you decide how you want to see it*.



Complete peace of mind

SEAT CONNECT uses the Breakdown Call feature to automatically put you in touch with our agents.

Standard equipment

Safety:

- 6 Airbags (2 front, 2 front side and 2 curtain)
- Child seat anchors for child seat system i-Size
- Visual and acoustic seat belt reminder with electric contact in front and rear
- 3-point seat belts in front and rear
- Multi-collision braking system
- Lane Assist
- Multifunctional camera
- Driver alert system

Electronics:

- 10.4" SEAT Media System+
- 6 speakers
- Electronic Cruise Control System (CCS) with Speed limiter
- Central locking system Keyless Go
- Electronic parking brake
- Speed-related variable steering assist (Servotronic)
- Power-adjustable heated exterior mirrors
- Four speed windshield wiper intermittent control with potentiometer
- Eco LED headlights
- Front and rear reading lights, LED illuminated boot and glove box

Exterior:

- Exterior mirrors in body colour
- Rear spoiler
- Sport bumpers
- Heat-insulating windshield glass
- Design 16" Alloy wheels
- Breakdown kit
- Tyre pressure monitoring system

Interior:

- Grey greenhouse
- Multifunctional sport leather steering wheel
- Manual height adjustment for front seats
- Manual lumbar support adjustment for front seats
- Luggage pockets on backrest
- 1-zone Climatronic
- Interior chrome inserts
- Operating voltage 12 V
- Alternator 140 A

*This equipment is optional.

Our global range of cars and product specifications varies from country to country. Please, visit your local SEAT website to know more about the product offer available for you.

Wheels

16"



**DESIGN 16"
BRILLIANT SILVER ALLOY
WHEELS**

St

17"



**DYNAMIC 17"
BRILLIANT SILVER ALLOY
WHEELS**

St



**DYNAMIC 17"
BRILLIANT SILVER
ALLOY WHEELS**

St



**DYNAMIC 17"
BRILLIANT SILVER
ALLOY WHEELS**

FR

18"



**PERFORMANCE 18"
NUCLEAR GREY
MACHINED ALLOY WHEELS**

FR



**PERFORMANCE 18"
COSMO GREY
MACHINED ALLOY WHEELS**

FR



**PERFORMANCE 18"
COSMO GREY
MACHINED ALLOY WHEELS**

FR



**PERFORMANCE 18"
NUCLEAR GREY MACHINED
ALLOY WHEELS**

FR



**BLACK 18"
ALLOY WHEELS**

FR

St Style
FR FR
Standard
Optional

Our global range of cars and product specifications varies from country to country.
Please, visit your local SEAT website to know more about the product offer available for you.



GRAPHENE GREY³

FR



DESIRE RED³

FR

Colours



CANDY WHITE¹

St FR



MAGNETIC TECH²

St FR



GLACIAL WHITE²

St FR



SAPPHIRE BLUE²

St FR



MIDNIGHT BLACK²

St FR



FIORD BLUE¹

St FR

St Style
FR FR
Standard
Optional
¹Soft
²Metallic
³Special Metallic
 *Exterior mirrors in Cosmo Grey for FR trim.

Our global range of cars and product specifications varies from country to country. Please, visit your local SEAT website to know more about the product offer available for you.

Upholsteries



CLOTH COMFORT SEATS

St



CLOTH COMFORT SEATS

FR



DINAMICA® SPORT SEATS

FR

Style	St
FR	FR
Standard	■
Optional	■



Our global range of cars and product specifications varies from country to country. Please, visit your local SEAT website to know more about the product offer available for you.

The heart wants what it wants

Hitting the slopes, taking your pets, or cruising the city. Whatever you're drawn to, let the SEAT Leon get you right to the heart of where you need to be. Discover exclusive SEAT accessories that let you do more of what you love.



Our global range of cars and product specifications varies from country to country. Please, visit your local SEAT website to know more about the product offer available for you.

SEAT Leon Black Edition

Black Side Skirts
Make a bold statement with the Black Side Skirts in the Black Pack Edition. These sleek, black-finished side accents give your vehicle a distinctive edge, enhancing its style and sophistication from every angle.



Our global range of cars and product specifications varies from country to country.
Please, visit your local SEAT website to know more about the product offer available for you.

Distinctive Character, Thrilling Drive
The SEAT Leon Black Pack Edition, designed for the sporty FR trim.

SEAT Leon Black Edition

18" Glossy Black Alloy wheels
Stand out with the 18" Glossy Black Alloy Wheels of the Black Pack Edition. These distinctive, high-gloss black rims add a touch of sophistication and sportiness, perfectly complementing the dynamic look of your vehicle.

Black Roof Spoiler
Enhance your vehicle's sporty appeal with the Black Roof Spoiler of the Black Pack Edition. This sleek, black accent not only boosts aerodynamics but also adds an extra layer of style and distinction to your ride.



Our global range of cars and product specifications varies from country to country. Please, visit your local SEAT website to know more about the product offer available for you.

Sleek Midnight Black Features
With Midnight Black Side Blades, a matching Roof Spoiler, and Black Exterior Mirror Covers, this edition delivers a distinctive and stylish presence.

Equipped with 18" Glossy Black Alloy Wheels, it completes the Leon's dynamic look.

Customisation

Think the SEAT Leon's bold new design can't get any better? Think again. Add some high-performance details to customise your Leon and push its potential even further.

Spoiler in Cosmo Grey
Stylish and sporty, the spoiler reduces the uplift that increases with speed and gives your Leon an even more dynamic profile.

Side skirts in Cosmo Grey
Side skirts improve aerodynamics and give your Leon that irresistible ground-hugging look.



Our global range of cars and product specifications varies from country to country. Please, visit your local SEAT website to know more about the product offer available for you.

Customisation

Rear diffuser in Matt Chrome

Get an even sportier look with a rear diffuser that brings an eye-catching touch to the back of your Leon Sportstourer.

Aluminium pedals & footrest

For unmatched automatic driving and total command, choose Aluminium pedals and a sleek matching Aluminium footrest for your Leon. Also available for models with manual transmission.



Our global range of cars and product specifications varies from country to country. Please, visit your local SEAT website to know more about the product offer available for you.

Front moulding in Matt Chrome

For refined front-end definition to your Leon Sportstourer Style trim, matte chrome moulding incorporated into the front bumper provides the ultimate level of urban, contemporary spirit.

Interior

Rubber floor mats + Inox side sills

Rubber floor mats help to keep the floor of your Leon as good as new. Matching side sills protect the area near your door from dust, spills and dirt.

Key covers

It's in your hands. Give your key a distinctive feel with a Key Cover in Soft Leather or Brushed Ice Metal.



Our global range of cars and product specifications varies from country to country. Please, visit your local SEAT website to know more about the product offer available for you.

Rear bumper protective moulding

Protect your loading area with this Inox-coloured adhesive that attaches to the upper part of your SEAT Leon's rear bumper.

Transport

The world is your playground. Use your SEAT Leon to play in it. These specially adapted transport accessories help you to carry everything you need for a weekend of relaxation and fun.

Ski rack
The more, the better. These plastic-coated aluminium rails with rubber pads can carry 4-6 pairs of skis or 2-4 snowboards securely.

Ski rack xtender
No need to strain your back to load your skis. The ski rack Xtender slides out easily for convenient loading and safe transport to the snow.



Our global range of cars and product specifications varies from country to country. Please, visit your local SEAT website to know more about the product offer available for you.



Our global range of cars and product specifications varies from country to country. Please, visit your local SEAT website to know more about the product offer available for you.



Tow bar

Need to take something extra along with you? This handy tow bar is just what you're looking for.

Towing bike rack

Extra wheels don't need to be extra work. Aluminium rails on the tow bar support any type of bicycle.

Transport

Transport

Bike rack
Going off the beaten path? Bring your bicycle with you in the easy to mount and reposition bike rack. Quick and easy fastening. With long-lasting care for your bike's frame tubes.



Our global range of cars and product specifications varies from country to country. Please, visit your local SEAT website to know more about the product offer available for you.

Roof box
Protect your luggage from the weather, with this stylish and aerodynamic roof box. Simple to assemble and anchor, it opens on both sides and is used together with roof bars. Ideal for longer family trips.

Protection

High walls boot tray
Resistant, waterproof and easy to clean, this boot tray keeps things secure on even the bumpiest of journeys. The Leon signature handwriting logo adds a distinctive touch.

Semirigid boot tray + Foam boot tray
Need to organise? Choose one of these anti-slip boot trays. Both are resistant, waterproof and easy to clean.



Our global range of cars and product specifications varies from country to country. Please, visit your local SEAT website to know more about the product offer available for you.

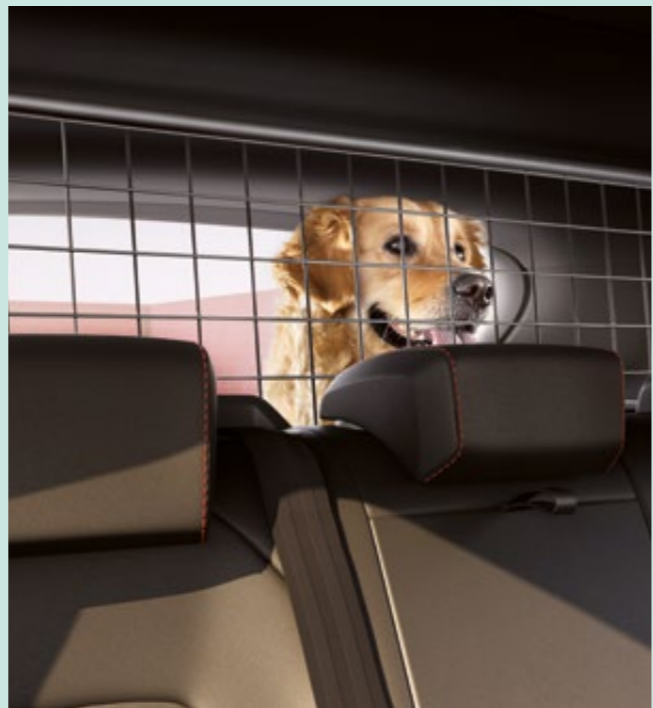
Reversible boot tray
Protect your SEAT Leon with this easy to secure, reversible boot tray. Keep dirt and liquids away from whatever's in your boot.

Pet Accessories

Weekend escape? Now you won't ever have to leave them behind. Choose these transport accessories to make sure your pet arrives safely. And so does your Leon.

Separation grille for pets
Perfect for keeping your pets happy and in place, the separation grille divides the passenger section from the boot and is easily removed without tools.

Dog harness
Hound or poodle? This dog harness is available from sizes S to XL to suit every dog weighing between 2kg and 40kg.



Our global range of cars and product specifications varies from country to country. Please, visit your local SEAT website to know more about the product offer available for you.

Protective seat cover
Stop your Leon's back seats getting damaged by scratches, moisture or hair. It comes with four straps that attach to all four head restraints for total protection.



Our global range of cars and product specifications varies from country to country. Please, visit your local SEAT website to know more about the product offer available for you.



Safety

The whole story. It's about being completely prepared, so you get there safe and sound with full peace of mind. When it comes to complying with safety regulations, our accessories will have you sorted for every journey.

Help Flash

In the event of a breakdown or accident, the SEAT Help Flash attaches to the roof of your SEAT, turning on automatically to warn other drivers of your situation. It is fully compliant with road safety regulations and expertly designed to improve visibility.

Baby Seat i-Size

For your most important passengers. This specially adapted child seat complies with the recent security legislation ECE R129 (i-Size). It comes with colour indicators to make for easy installation, while also providing ergonomically safe positions for new-borns and toddlers. *Suitable for children up to 13kg.

Bolder living starts here

Life's too short to stand still. The experts in our SEAT Service team use only SEAT Genuine Parts to keep your SEAT Leon at its best – and you at your most relaxed.



Our global range of cars and product specifications varies from country to country. Please, visit your local SEAT website to know more about the product offer available for you.

Life's for living

With SEAT CARE, you benefit from a package of SEAT After Sales services at a fixed and competitive monthly rate. Value for money, with the service you expect. Starting from XX€ / month, you can save up to 50% compared to standard costs. No worries. For more fun.



Go the extra mile. We've got your back

The SEAT Warranty Extension lets you extend your 2-year manufacturer's warranty for 1, 2 or 3 years, or up to 100,000 km — whatever comes first. And if your car is new, the warranty comes included. Easy. Cost-effective. Ready for bolder living.



Whatever you need. Just ask

Want a tow? More fuel? On-the-spot repair? SEAT Mobility Service is here for you. 24/7. Everywhere in the EU, plus most neighbouring countries. For up to 10 years. This is complete, reliable roadside assistance. And best of all? If your SEAT is new, you get 2 years free.



Play harder. We'll keep you on track

SEAT Insurance is tailor-made to your car. To make moving forward easy. Our 24-hour customer service and official workshops using only SEAT Genuine Parts get you back on the road. Vandalism or theft? No problem. We're your ride.



Challenge ahead. Worries behind

Live life to the fullest. SEAT Service & Maintenance contracts cover most services in the SEAT Service Programme for the first 3, 4 or 5 years of ownership. Available in Basic or Premium, with options for financing. So you can put your positivity into what really matters.



Our global range of cars and product specifications varies from country to country. Please, visit your local SEAT website to know more about the product offer available for you.



Environmental information



SEAT Eco Drive Profile

ECO mode allows a driving style that modifies engine and transmissions parameters in order to reduce fuel consumption and emissions.



Lighting

Headlamps and rear lamps are 100% LED, increasing life service by up to 10 times. For headlamps, the luminous flux effectiveness is increased at least 30% in comparison to a halogen lamp



Engines





• **Diesel:** 2.0l Diesel engines allow the use of R100 fuel. R100 is made from 100% renewable raw material (Hydrotreated Vegetable Oil, HVO), achieving a reduction of up to 90% in CO₂ emissions during its production, compared to a conventional fuel.




• **e-HYBRID:** Zero tailpipe emissions in electric mode.

Environmental information

 **e-Range monitor**
Informs the driver of the increase in range of electric-only engine when combustion-only is off.

 **Zero Emissions**
An indicator that displays the distance driven with zero tailpipe emissions in electric-only mode.

 **Manufacturing process**
Between 2010 and 2023, we reduced the CO₂ emissions per manufactured car by 69.3%, while also cutting the energy demand per car by 33.3%. Additionally, we achieved a 45.1% saving in water consumption and a 78.9% reduction in waste generated per car.

In our path towards a circular economy, we have established a process for dismantling discarded parts and components. This process breaks down complex items into single-material parts, enabling proper segregation and giving these materials a second life. As a result, what was once considered non-recoverable waste is now transformed into revalorized, reusable materials.





SEAT is committed to a policy of continuous product development and reserves the right to make changes to specifications, colours and prices without notice. The information in this brochure can therefore be given as guidance only. While SEAT makes every effort to ensure that specifications are accurate at the time of publication, you should always check with your authorised SEAT Partner for the latest information. Due to limitations of the printing process the colours reproduced in this brochure may vary slightly from the actual paint colour and material. This vehicle and all its parts, as well as the original spares, were designed according to the Legal Regulations governing the prevention and minimisation of Environmental Impact, through the use of recycled/recyclable materials, with measures taken to achieve suitable recycling for the conservation and improvement of environmental quality.